

Introduction to Botany. Lecture 19

Alexey Shipunov

Minot State University

October 14, 2016



1 Questions and answers

- Quiz

2 Tissues

- Step two: skeleton. Supportive tissues
- Step three: construction sites. Meristems



1 Questions and answers

- Quiz

2 Tissues

- Step two: skeleton. Supportive tissues
- Step three: construction sites. Meristems



Questions and answers

Quiz



Final question (2 points)

What is the temperature/gase conflict?



Final question (2 points)

What is the temperature/gase conflict?

In water:

- When temperature is high enough and good for photosynthesis, there are little carbon dioxide
- When there is enough carbon dioxide, temperature is low



More about plants₂ classification

- Mosses (Bryophyta)
- Ferns and allies (Pteridophyta)
- Seed plants (Spermatophyta)
 - Conifers (Pinopsida)
 - Some other classes of seed plants
 - Angiosperms (Magnoliopsida)
 - Monocots (Liliidae)
 - Other subclasses of angiosperms (together: “dicots”)



Tissues

Step two: skeleton. Supportive tissues

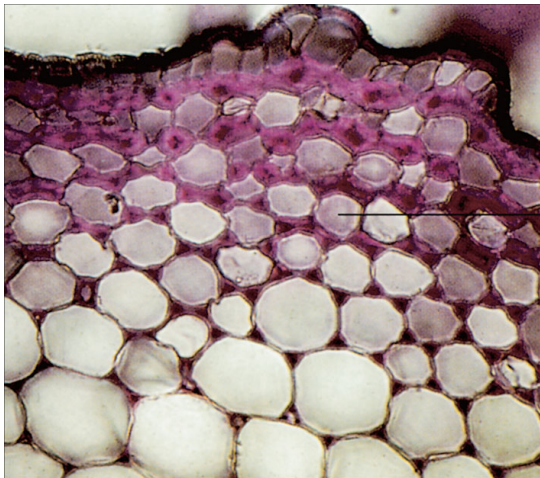


Collenchyma: living supportive tissue

- Elongated cells
- Thick primary cell wall (pectins + cellulose)
- Main functions: mechanical support of young stems and leaves



Angled collenchyma



collenchyma cell

© 2006 Brooks/Cole - Thomson

Collenchyma cells of marigold (*Calendula officinalis*)

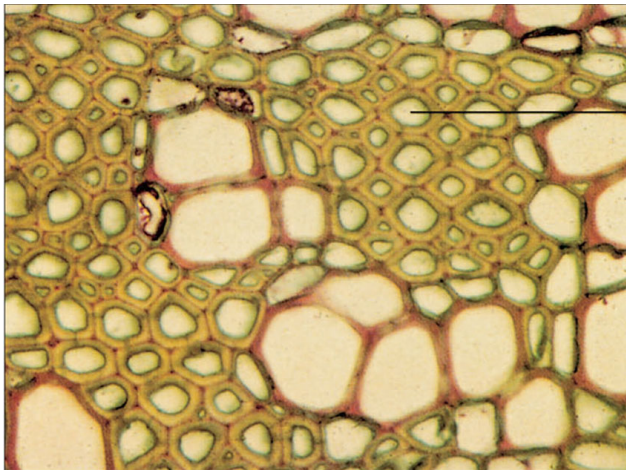


Sclerenchyma: dead supportive tissue

- Long cells (sclerenchyma fibers) or short crystal-like cells (sclereids)
- Dead cells with thick secondary cell wall, rich of lignin
- Supports weight of older plant organs, makes fruits non-edible before they become rip, makes stems firm



Sclerenchyma fibers



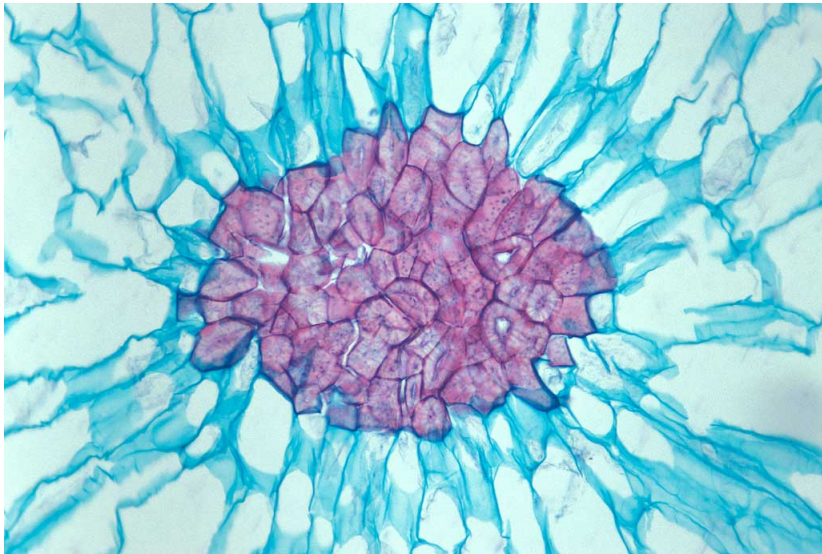
fiber

© 2006 Brooks/Cole - Thomson

Cross-section of sclerenchyma fibers in geranium (*Pelargonium* sp.)



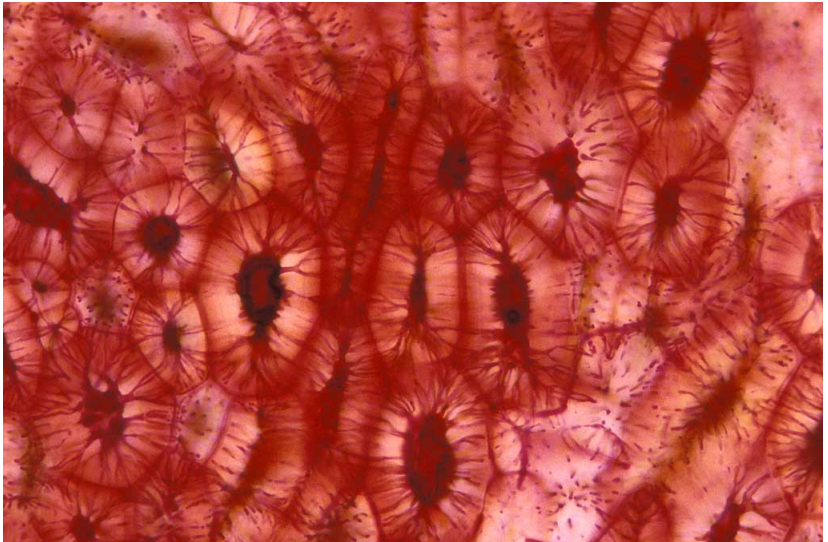
Stone cells



Stone cells (kind of sclereids) in pear fruit (*Pyrus communis*)



Sclereids from cherry pit



Sclereids from cherry (*Prunus* sp.) pit (LM $\times 400$)



Tissues

Step three: construction sites. Meristems

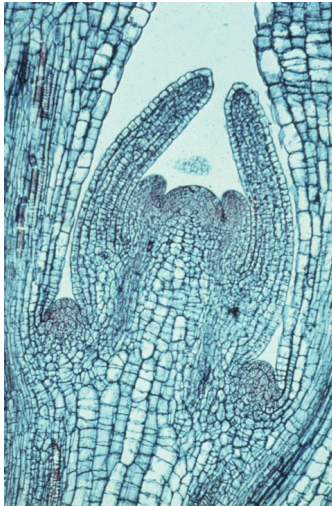


Meristems: apical

- Centers of plant development
- Locate on the very ends of roots (RAM) and shoots (SAM)
- Produce intermediate primary meristems which form all primary tissues



SAM

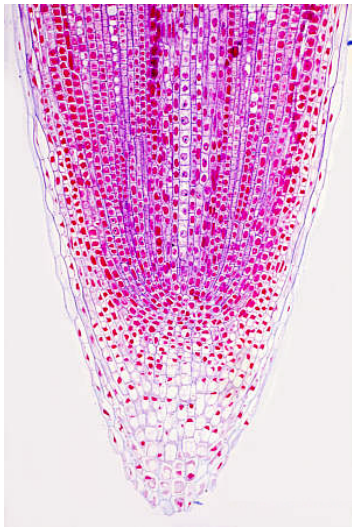


© 2006 Brooks/Cole - Thomson

Coleus sp. stem apical meristem (LM $\times 100$); primordia (embryonic leaves) are visible.



RAM



Corn (*Zea mays*) root apical meristem (© D. Webb)



Lateral meristem: cambium

- Originates from procambium which in turn originates from apical meristems
- Usually arises between two vascular tissues
- Main function: thickening. Produces secondary vascular tissues



Primary and secondary tissues

- Primary tissues originate from stem or root apex through primary meristems
- Secondary tissues originate from lateral meristems



Additional meristems

- **Intercalary** meristems: locate in stems, regulates stem elongation
- **Marginal** meristems are leaf-specific, they regulate leaf shape
- **Repair** meristems help to cure wounds, they form buds and roots in unusual places



Summary

- **Epidermis** is a complex tissue which includes stomata
- **Collenchyma** and **sclerenchyma** are simple supportive tissues
- **Secondary tissues** originate from lateral meristems (i.e., cambium)



Final question (2 points)



Final question (2 points)

What are differences between colenchyma and sclerenchyma?



For Further Reading



A. Shipunov.

Introduction to Botany [Electronic resource].

2016.

Mode of access:

http://ashipunov.info/shipunov/school/biol_154

